

# POE MARINE (S.E.A.) PTE LTD

35 PIONEER ROAD SINGAPORE 628503

TEL: 6 861 6488 FAX: 6 861 1942

Website: [www.honghanggroup.com.sg](http://www.honghanggroup.com.sg)



## **MV PIONEER 3703 – 3700 BHP** **ANCHOR HANDLING TUG**

### **PRINCIPAL PARTICULARS**

Port Of Registry : Singapore  
Call Sign : 9V78391  
Official No. : 395711  
Year Built : 2008  
Class : American Bureau Of Shipping  
Notation : ✕ Hull ✕ Mach Tug (Unrestricted)  
Type : Anchor Handling Tug  
IMO No. : 9578696  
Flag : Singapore  
Owner/Operator : POE SHIPPING PTE LTD



### **DIMENSION**

Length Overall : 38.00 m  
Length Waterline : 36.70 m  
Breadth Moulded : 11.80 m  
Depth Moulded : 4.80 m  
Draft Moulded : 3.80 m  
GRT : 483 MT  
NRT : 145 MT

### **PERFORMANCE**

Trial Speed : 12.0 knots at trial condition  
Type of fuel : Marine Gas Oil

### **CARGO CAPACITIES**

Deck Cargo :  
Deck Strength :  
Clear Deck Area : 160 m<sup>2</sup>  
Fuel Oil : 344 MT  
Fresh Water : 80 MT  
Freezer : 8 m<sup>3</sup> (-18<sup>o</sup> C temperature)  
Chiller : 8 m<sup>3</sup> (+4<sup>o</sup> C temperature)  
Foam : NIL  
Detergent : NIL

### **PROPULSION SYSTEM**

Main Engine : 2 x 1,850 BHP (NIIGATA 6MG28HX)  
Shaft Alternator : Rated output of 1380 kW  
Auxiliary Generator : 3 x 220 Hp / 164 kW  
Emergency Generator : 1 x 72 Hp / 47 kW  
Bow Thrusters : 1 x 3 MT  
Stern Thruster : Nil  
Steering Gear : Twin Disc (6:1)  
Propulsion : 1 x FPP

### **DECK EQUIPMENT**

Windlass : 1 x 3.7 MT @ 15M/MIN  
Anchor : 2 x 780 kg Stockless Anchors  
Anchor Chain : 165 m x 24 mm Ø port & starboard  
Capstan : 2 x 5 MT  
Tugger Winch : 2 x 5 MT  
Deck Crane : Nil

### **FIRE FIGHTING EQUIPMENT**

#### **External**

FiFi : Fire Fighting Class 1/2  
Fire pump : 1 x 35 m<sup>3</sup>/hour at 2900 rpm (16 bar)  
Fire monitor : 1 x 1200 m<sup>3</sup>/hour (12 bar)

#### **Internal**

Fixed System in E/R: CO2 system in engine room  
Fire Detection : All living space and Engine Room System

### **OTHERS**

Rescue Zone : Port & Stbd Main deck  
Water Maker : 1 x 6 T/ day (Sea Water Type)

### **TOWING & ANCHOR HANDLING EQUIPMENT**

Bollard Pull : 55.2 MT @ 100%MCR  
Tow/ AH Winch : Double Drum Waterfall Type,  
Upper Drum – Ø 48 mm x 800 m (Towing)  
Lower Drum – Ø 38 mm x 75 m (Anchor Handling)  
Remote control from wheelhouse /local hydraulic system  
Tow/ AH Pull : 50 MT @ 4 m/ min – Low Speed  
(1<sup>st</sup> Layer) 10 MT @ 15 m/ min – High Speed  
Braking Capacity : 150 MT  
Stern Roller : Ø 4.7 m x 1.9 m length, SWL 7.5 MT  
Shark Jaws : SWL 300 MT  
Tow Pins : SWL 160 MT

### **DISCHARGE RATES**

Fuel Oil : 1 x 10 m<sup>3</sup>/ hr @ 20 m head  
Fresh Water : 2 x 3 m<sup>3</sup>/ hr @ 25 m head  
Bilge / Ballast Pump : 1 x 25 m<sup>3</sup>/ hr @ 35 m head  
Drill Water Pump : 1 x 25 m<sup>3</sup>/ hr @ 20 m head

### **ACCOMMODATIONS**

Berths : 2 x 1 berth cabin = 2  
3 x 2 berth cabin = 6  
4 x 4 berth cabin = 16  
Total : 24  
All cabins are fully air-conditioned

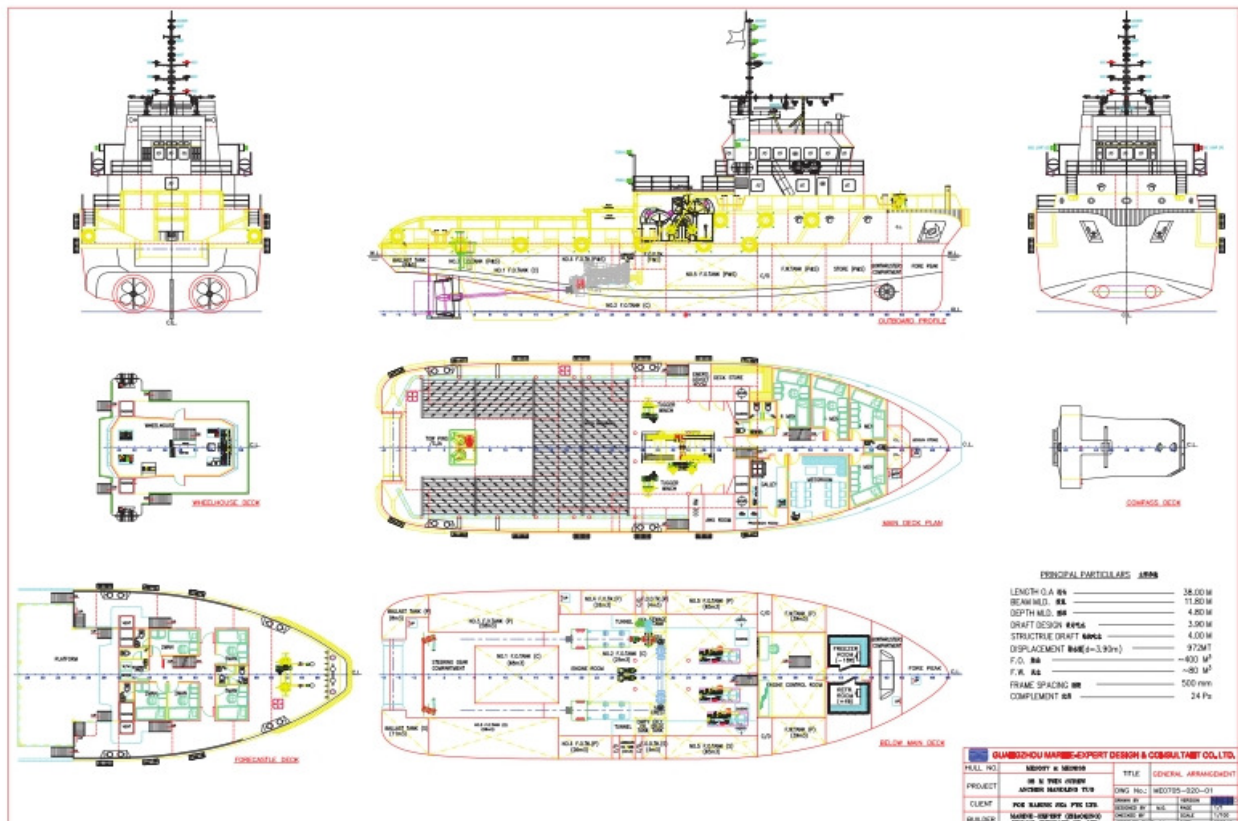
\*Particulars given herein are believed to be correct but not guaranteed. Owners reserve the right to amend specifications without notification.

Revised Dated: January 2014

Website: [www.honghanggroup.com.sg](http://www.honghanggroup.com.sg)



Search Lights	: 2 x 1000W Aqua
Floodlights	: 6 x 500W
Liferafts	: 2 sets @ 25 pax
Lifebuoys	: 8 pcs with buoy lights
Life jackets	: 30 sets
Immersion Suit	: Nil
Rescue boat	: Nil
Parachute Distress	: 12 Units, SOLAS Type
Emergency Escape	: 2 sets with containers Breathing Device



Revised Dated: January 2014