

Vessel Specification

SPECIFICATION :

Year Built : 2014
Flag/Port Registry : INDONESIA /JAKARTA
Class : ABS + BKI
GT / DWT : 1678 / 1340
Call Sign : Y C M B
IMO : 9697765
MMSI : 525018424

GENERAL :

Length Overall : 59.25 m
Breadth : 14.95 m
Max Draft : 4.95 m
High : 30 m
Speed : 13.00 Knots @ 100% MCR at Ballast Condition
DP System : DP-1 Kongsberg

ACCOMODATION :

Cabins : 1 man cabin x 4 – 4 man
: 2 man cabin x 3 – 6 man
: 4 man cabin x 8 – 32 man
Total : 42 man
Hospital : 1 Single

MACHINERY :

Main Engine : 2 x CAT 3516B, 2575 BHP @ 1600 rpm
Gearbox : 2 x Reintjes LAFF873L, Ratio 7.526:1
Main Generator : 2 x 350 KW, 415/3/50 - diesel engine driven
Shaft Generator : 2 x 800 KW, 415/3/50 – main engine driven via the gearbox PTO.
Emergency Generator : 1 x 65 KW 415/3/50
Bow Thruster : 2 x Bow CPP Tunnel thrusters, 8 mT thrust
Steering Gear : 2 x Electro-Hydraulic driven steering gear
Propellers : 2 x CPP

CARGO CAPACITY :

Deck Area : 330 m²
Deck Loading : 7.5 Tons / m²
Fresh Water : 300 m³
Fuel Oil : 528 m³
D.W/Ballast : 400 m³
Foam : 13 m³
Detergent : 13 m³
Mud : 210 m³
Mud/Brine : 165 m³

OTHERS :

- Extra FO Cargo Pump 3 screws with capacity 150 m³/h
- 2 x Mud Tank Agitator with Jet Ring for higher efficiency

BULK HANDLING SYSTEM

Suitable for Carriage of Cement/Baryte
Class : ABS
Total Capacity : 6600 ft² approx. (in 4 tanks)
Working pressure : 80 psi

TOWING/ANCHOR HANDLING EQUIPMENT :

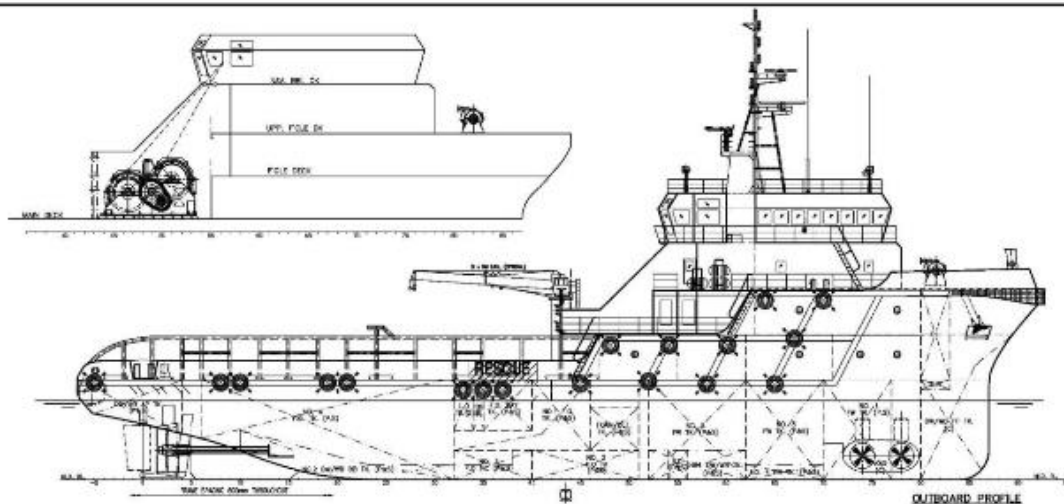
Bollard Pull : 68 Tons
Towing – AH winch : 1 x Electro-Hydraulic Brake Holding(AH/Towing) : 200 mT
Pull 1st Layer(Anchor Handling/Towing) : 150 mT
Length and Tension Monitoring System (LTMS)
Drum Capacity : 1000 M of Ø 56 mm wire for top drum (Anchor Handling)
1000 M of Ø 56 mm wire for top drum (towing)
Towing Pins : 2 x vertical hydraulic towing pins 200 mT
Shark Jaw : 1 x hydraulically fork for Ø 50 – 70 mm wire and 28 – 75 mm
Stern Roller : 1 unit 4000 mm x 1600 mm diameter with 200 mT SWL
Crane : 3 Tons @ 9 m
Others : - 1 x hydraulic driven Storage Reel, 5 mT @ 15 m/min
drum capacity of Ø 56 mm wire x 1,000 m
- 2 x hydraulic driven Capstan, 5 mT @ 15 m/min
- 2 x hydraulic driven tugger winch, 10 mT @ 15 m/min

FIRE FIGHTING EQUIPMENT :

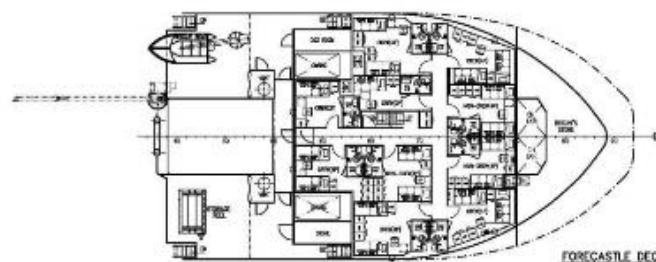
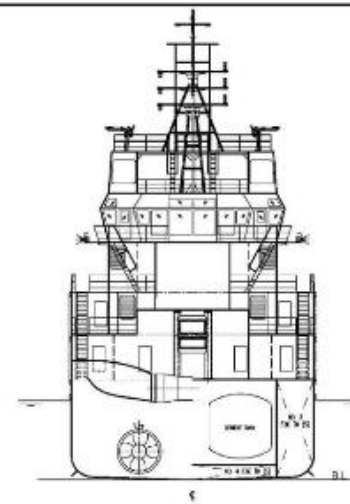
Fire pump : FIFI Class 1 Capacity 2 x 1200 m³/Hr
Oil Dispersant : Provided at Port & Starboard Side of the vessel.
CO2 System : CO2 Fixed protection System

NAVIGATION :

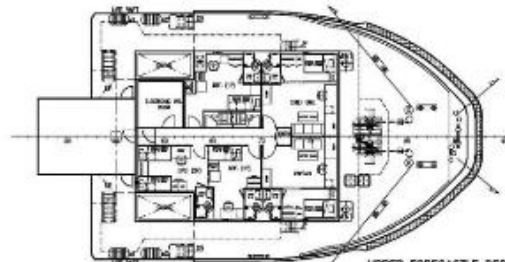
- 2 x Radar (X-Band)
- Echo sounder
- GPS Plotter
- Gyro-compass
- Magnetic Compass
- Auto-pilot
- Weather Facsimile Receiver
- Doppler Speed Log.



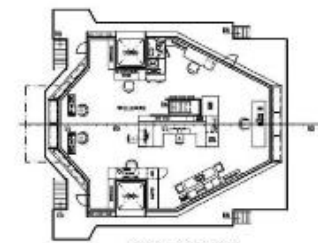
OUTBOARD PROFILE



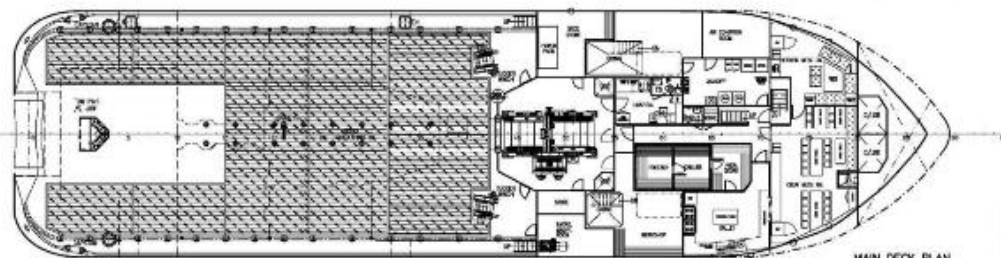
FORECASTLE DECK



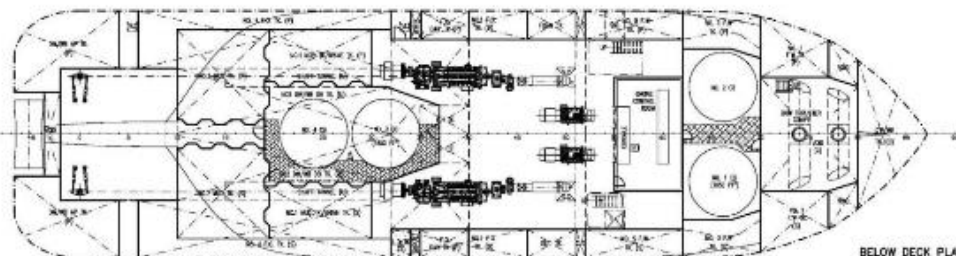
UPPER FORECASTLE DECK



BRIDGE DECK PLAN



MAIN DECK PLAN



BELOW DECK PLAN

PRINCIPAL DIMENSIONS

| | |
|--|------------------------|
| LENGTH (O.A.) | 59.250 M |
| LENGTH (M.L.) | 56.000 M |
| LENGTH (B.P.) | 52.200 M |
| BEAM (M.D.) | 14.950 M |
| DEPTH (M.D.) | 5.100 M |
| DESIGN DRAFT | 4.950 M |
| FUEL OIL | 528 M ³ |
| FRESH WATER | 301 M ³ |
| DRILL WATER / W.B. | 400 M ³ |
| MILK/BINE | 378/156 M ³ |
| CLAR. DECK AREA | 330 M ² |
| DECK CARGO (DECK LOADING = 7.5T/M ²) | 500 TONS |
| DRY BULK TANKS (4x1650 FT ³) | 187 M ³ |
| WAIN PROPULSION ENGINE | 2 X 2575 SHP |
| SPEED (TRIALS) | 13.0 KNOTS |
| BOLLARD PULL | 65 TONS |
| COMPLEMENT | 42 MEN |
| CREW | 30 MEN |
| NON-CREW | 12 MEN |

CLASS & NOTATION :

ABS ◊ A' ◊ RW 'BP', TOWING VESSEL, FIRE FIGHTING VESSEL
CLASS 1, OFFSHORE SUPPORT VESSEL, 'AH'
+ AMS + DPS-1, UNRESTRICTED NAVIGATION

APPROVED BY ABS ON 10-SEP-2013

THIS DRAWING AND THE INFORMATION IT CONTAINS IS
EXCEPT AND BEARING THE PROPERTY OF KHIAM
CHUAN MARINE PTE. LTD. IT IS NOT TO BE REPRODUCED
OR USED IN ANY MANNER WITHOUT THE WRITTEN
CONSENT.

M.V. "SK CANOPUS"

| ITEM | DETAILS OF MODIFICATION | BY | DATE |
|---------------------|--|----------------|------|
| DESIGN | FUJIAN SOUTHEAST SHIPBUILDING CO., LTD | | |
| CONSTRUCTION | KHIAM CHUAN MARINE PTE. LTD | | |
| PROJECT | 50m MULTI-PURPOSE OFFSHORE SUPPLY/ ANCHOR HANDLING VESSEL | | |
| GENERAL ARRANGEMENT | | | |
| DRAWN | 1:150 | KCM/0331(E)-G1 | REV. |
| CHECKED | | | |
| DATE | | | |