



**Strategic Marine**  
**Maritime Solutions**  
 Lot 4 & 5, Level 7, Wisma Damai Point, Luyang  
 88300 Kota Kinabalu, Sabah, Malaysia  
 Tel : + 6 (088) 217001  
 Fax : + 6 (088) 217002  
 Email : admin@jcb.com.my

## BORNEO IV

### MAIN PARTICULARS

LENGTH OVERALL	40.37 m
DRAFT	2.35 m
BEAM	7.50 m
DEPTH	3.30 m

### CAPACITIES

FRESH WATER	28,600 l
FUEL OIL	62,400 l
HYDRAULIC OIL	200 l
SEWAGE TANK	1740 l

### CARGO DECK

DECK LOADING	2.0 t/m <sup>2</sup>
CARGO CAPACITY	40 t
DECK AREA	109m <sup>2</sup>

### TONNAGE

GRT	250 t
NRT	71 t

### MACHINERY

NUMBER OF MAIN ENGINES (WING)	2
MAIN ENGINE MAKE (WING)	Cummins
MAIN ENGINE MODEL (WING)	KTA 38 M2 Tier 2
MAIN ENGINE RATING (WING)	1350BHP @1900RPM
GEAR BOX MAKE (WING)	Twin Disc
GEAR BOX MODEL (WING)	MGX 6690 SC
NUMBER OF MAIN ENGINES (CENTRE)	1
MAIN ENGINE MAKE (CENTRE)	Cummins
MAIN ENGINE MODEL (CENTRE)	KTA 50 M2 Tier 2
MAIN ENGINE RATING (CENTRE)	1800BHP @ 1900 RPM
GEAR BOX MAKE (CENTRE)	Twin Disc
GEAR BOX MODEL (CENTRE)	MGX 6848 SC
MAIN GENERATORS	Cummins 6BT 80eKw
BOW THRUSTER DRIVE	Petters S-65-80 AL
BOW THRUSTER ENGINE	Cummins 6bt5.9 150bhp
OILY WATER SEPARATOR	Bosch

### PERFORMANCE

SPEED	26 KNOTS
LOAD CONDITIONS	50 DWT
ENGINE OUTPUT	85% MCR
ENDURANCE	4 hr @ 85%
FUEL CONSUMPTION	500 l p/h @ 85%

### ACCOMODATIONS

CREW QUARTERS	10 pax
PASSENGER SEATING	70 pax series

### ELECTRONICS & CONTROLS

RADAR	Furuno Model FAR-2117 19 inch
STANDBY RADAR	Furuno Model Avnet 1934C/NT
ECHO SOUNDER	Furuno Model FE-700
GPS	Furuno GP-150
ECDIS	Furuno Stand alone type FEA-2107-D
GMDSS MF-HF SSB RADIO	Furuno FS-2570 250W
INMARSAT C	Felcom-15 Inmarsat complete set
GMDSS VHF/DSC RADIOS	2 X Furuno 8800S Marine VHF Radio
MFHF Radio For Aft Console	Furuno FS-2570 250W
NAVTEX RECEIVER	JFuruno Model NX-700
EPIRB	McMurdo E5 Smartfind 406mgz
SART	McMurdo Transponder Model S4, 9 Ghz
VHF RADIOS (HANDHELD)	3x McMurdo VHF / Walkie Talkie
SPARE BATTERIES	3 units McMurdo Lithium Battery
TALKBACK / PA SYSTEM	Vingtor ETB-100
TELEPHONE SYSTEM	CMR SPT system
CCTV	2 engine room & 1 pump room cameras
MAGNETIC COMPASS	125mm SILVA offshore, or equivalent
AIS	Furuno Model FA-150
NIGHT VISION DEVICE	Portable Bushnell Monocular

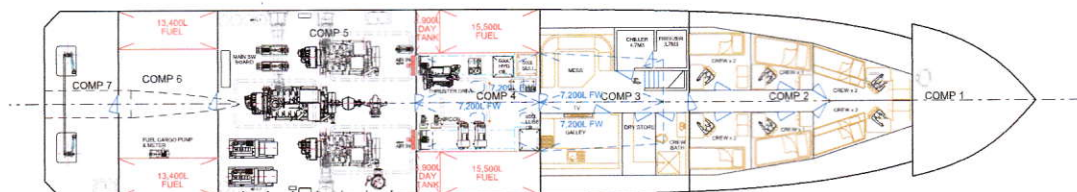
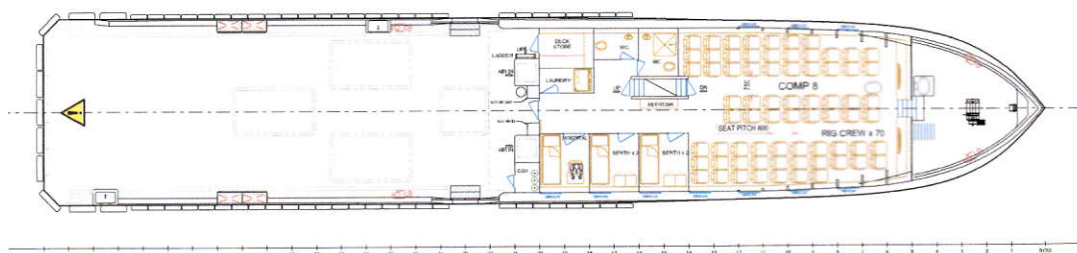
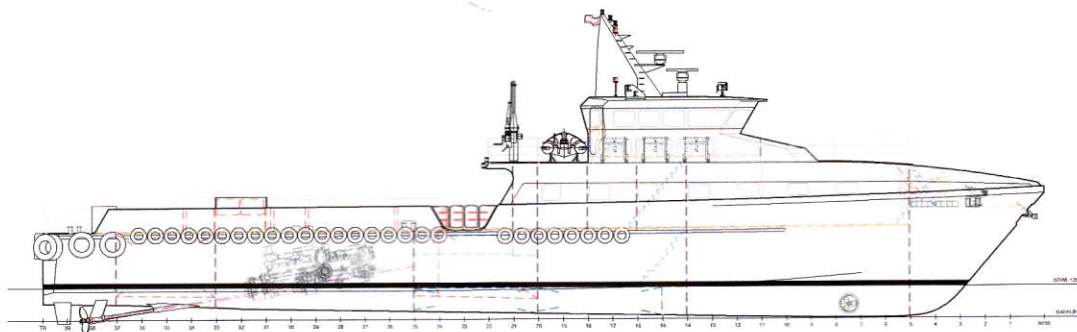
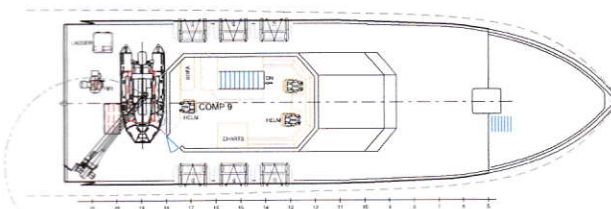
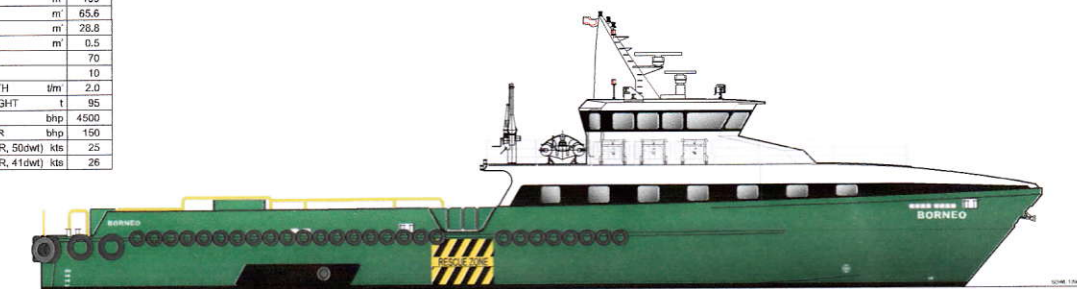
### SPECIAL EQUIPMENT

FIRE FIGHTING	Fixed CO <sub>2</sub> System in All Machinery Spaces
LIFE RAFTS	4 units 25 man and 2 units 20 man CSM
RESCUE EQUIPMENT	Rescue Boat and Davit
SEARCHLIGHTS	2 units 1000W SeaLux Searchlights.

DP 1

40 M OFFSHORE UTILITY VESSEL

PRINCIPAL PARTICULARS	
LENGTH O.A.	m 40.37
BEAM MOULDED	m 7.5
DEPTH MOULDED	m 3.3
GRT	280(est)
DRAFT, MAX BL	m 1.72
DRAFT, MAX PROP	m 2.35
CLEAR DECK	m 109
FUEL OIL	m 65.6
FRESH WATER	m 28.8
BLACK WATER	m 0.5
PASSENGERS	70
CREW	10
DECK STRENGTH	10m 2.0
MAX DEAD WEIGHT	t 95
PROPULSION	bhp 4500
BOW THRUSTER	bhp 150
SPEED (85%MCR, 50dwt)	kts 25
SPEED (85%MCR, 41dwt)	kts 26



**Strategic Marine**

LOT 5, CLARENCE BEACH ROAD  
HENDICOTT W A 6106  
TELEPHONE (08) 94374468  
FACSIMILE (08) 94374466

**SOUTHERLY DESIGNS**  
2/11-17, Main Street, Melbourne VIC 3000, Tel: 03 9412 1111, Email: info@southerlydesigns.com.au

# **40.37m RIG-PERSONNEL / UTILITY VESSEL** **GENERAL ARRANGEMENT**

REV	DATE	BY	CHECKED
001	001	001	001
002	001	001	001
003	001	001	001
004	001	001	001
005	001	001	001
006	001	001	001
007	001	001	001
008	001	001	001
009	001	001	001
010	001	001	001
011	001	001	001
012	001	001	001
013	001	001	001
014	001	001	001
015	001	001	001
016	001	001	001
017	001	001	001
018	001	001	001
019	001	001	001
020	001	001	001

**DRAWING NUMBER:**  
**S750-110 G**

**SCALE:**  
**A3**